

SK-24

Micro-computer based
Standard welding controls

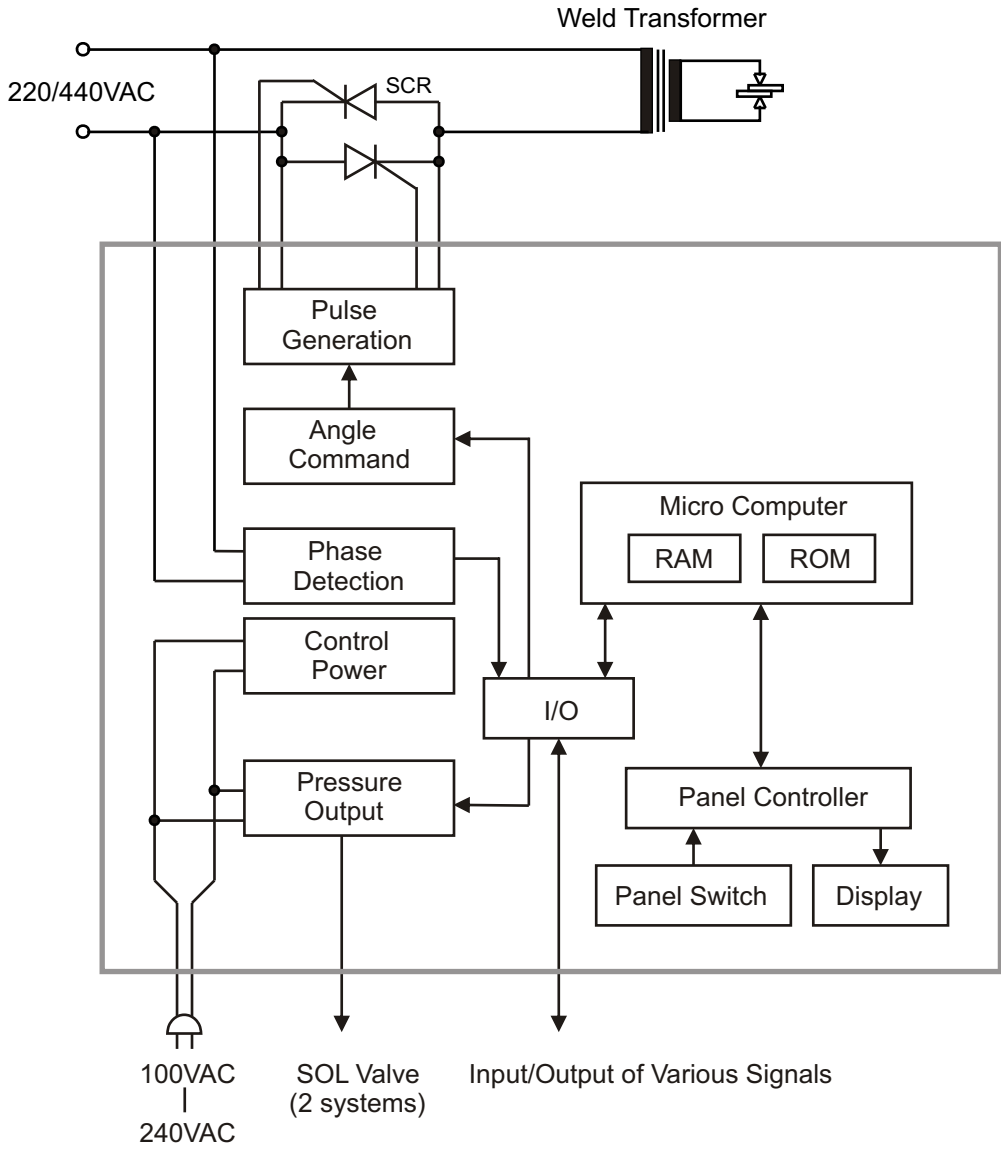


FORWEL

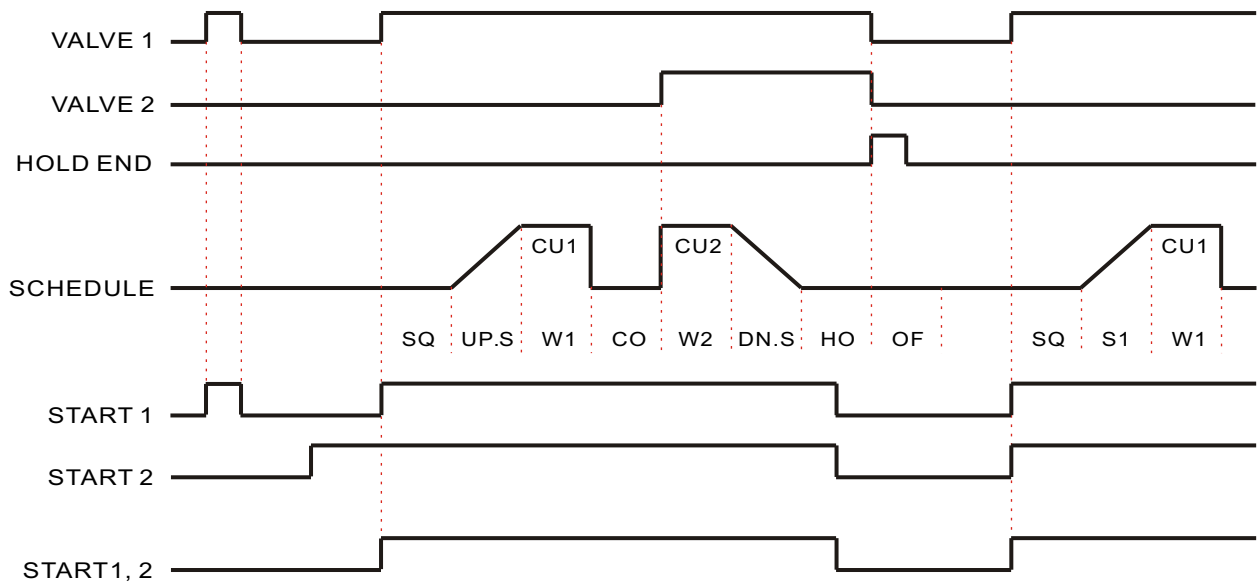
Ratings and Specifications

ITEM		SK-24V, SK-24H
Weld Power		200~240VAC/380~480VAC, 50/60Hz
Control Power		100~240VAC (Free Voltage), 50/60Hz
Indication		7-Segment LED Display
Operation Mode		Spot, Twin Head Spot, Butt, Seam & Brazing
Weld Counter		0 ~ 9999 counts
Program Parameters	SCHEDULE	0 ~ 9 schedules
	SQUEEZE	0 ~ 99 cycles
	SLOPE 1 (UP)	0 ~ 9 cycles
	WELD 1	0 ~ 99 cycles
	COOL 1	0 ~ 9 cycles
	WELD 2	0 ~ 99 cycles
	SLOPE 2 (DOWN)	0 ~ 9 cycles
	COOL 2	0 ~ 99 cycles
	OFF	0 ~ 99 cycles
	CURRENT 1	0.0 ~ 99.9%
CURRENT 2		
Control Method		Phase Control by Thyristor
Operation Mode Input		Mode 1, Mode 2
Start Input		Start 1, Start 2
Thermo Input		SCR & Transformer Thermo Switch
Hold End Output		Relay Contact Output, One Short (0.2 sec)
Pressure Valve Output		Valve 1, Valve 2 Control Voltage Output (100 ~ 240VAC)
Memory Retention		More than 10 years after power failure
Ambient Temperature		-10 ~ 55°C (with no icing)
Storage Temperature		-25 ~ 85°C (with no icing)
Ambient Humidity		35% ~ 85% RH (with no condensation)
Dimensions	SK-24V	85mm(W) x 260mm(H) x 207mm(D) 3.3"(W) x 10.2"(H) x 8.1"(D)
	SK-24H	260mm(W) x 85mm(H) x 207mm(D) 10.2"(W) x 3.3"(H) x 8.1"(D)

Block Diagram



Basic Time Chart





Selection Table :

SK24V

Product name

SK24V : Vertical type

SK24H : Horizontal type

- Control power : 100~240VAC
- Welding power : 200~240VAC and 380~480VAC
- Pressure Valve output : Control voltage output